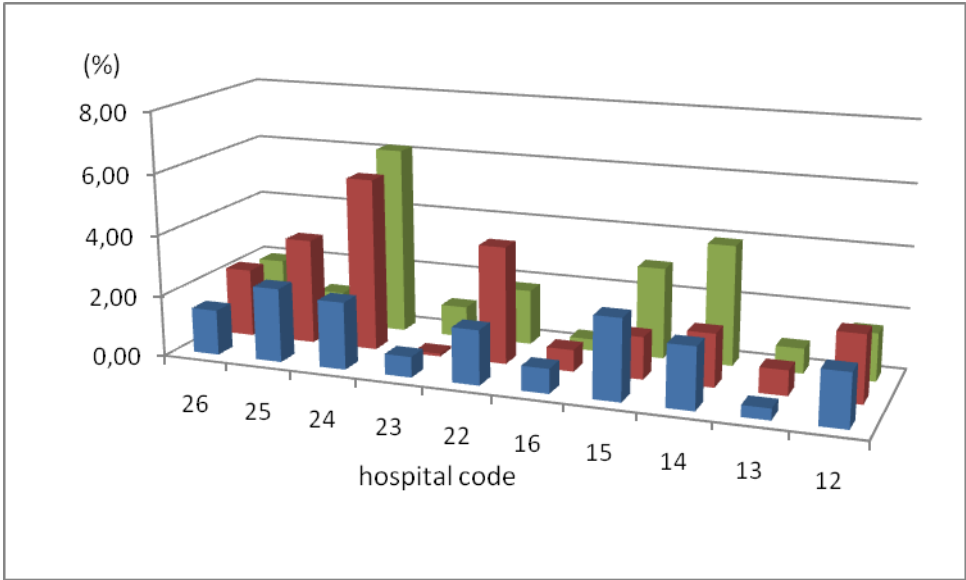


**Maternal mortality in Kaduna and Kano hospitals, Nigeria**  
**January-December 2008 and January – June 2009**



Maternal mortality ratio (%) in 10 hospitals indicated by a code number from Kaduna and Kano, Nigeria from Jan.-June 2008 (green), July –December 2008 (red) and Jan.- June 2009 (blue):

During the time of observation a considerable improvement of maternal mortality is demonstrated in some of the hospitals